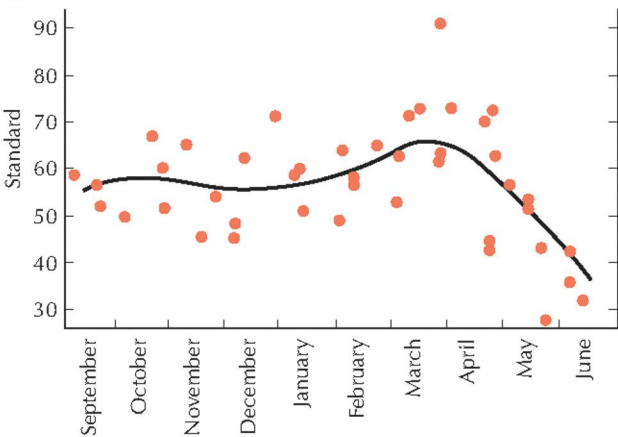


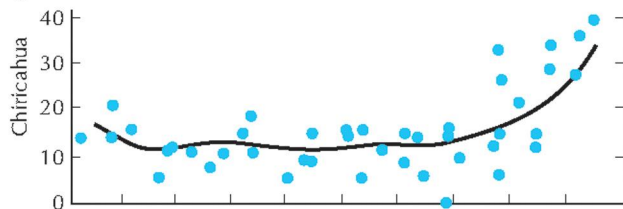
A

Image not  
available  
for online use.

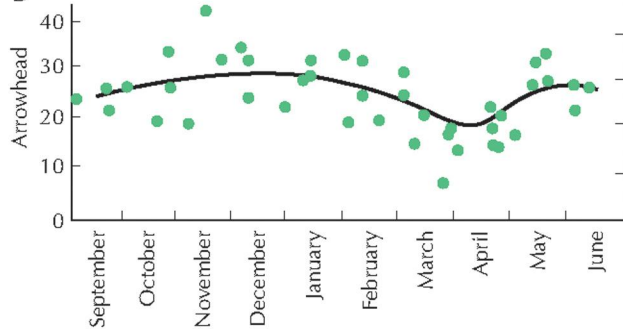
B



C



D



**FIGURE 1.39.** Inversion frequencies over time as studied by Dobzhansky. (A) Study site in the Sierra Nevada, California. (B–D) Frequencies of three chromosome types changed systematically through the year. These results implied the action of selection rather than of genetic drift.

1.39B–D, redrawn from Dobzhansky T., *Genetics* **28**: 162–186, © 1943 Genetics Society of America