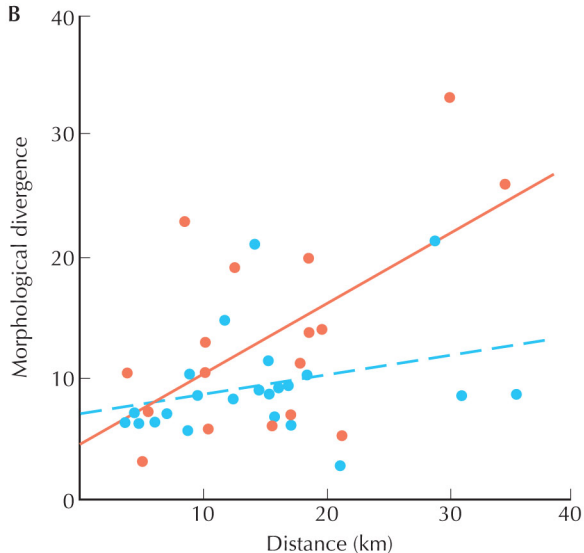


A

Image not  
available  
for online use.

B



**FIGURE 22.28.** (A) Fence lizard (*Sceloporus undulatus*). (B) In the southeastern United States, populations that are separated by rivers (red) differ in morphology more than do populations separated by the same geographic distance, but with no barrier to movement (blue).

22.28B, modified from Pounds J.A. et al., *Evolution* 35: 516–528, © 1981 Society for the Study of Evolution